

Informationsintegration und Web-Portale

Tutorial:

Exkurs: Java Pet Store Demo-Applikation

Erik Buchmann

buchmann@ira.uka.de

Vorstellung einer Beispiel-Anwendung



The Java Pet Store Demo is a fictional sample application from the J2EE BluePrints. For more information, visit the J2EE BluePrints Web site at <http://java.sun.com/j2ee/blueprints/>

[J2EE BluePrints](#) | [Java Software](#) | [Sun Microsystems](#)
© 2001 Sun Microsystems Inc. All rights reserved. Use is subject to license terms.

- <http://java.sun.com/developer/releases/petstore>



Java™ Pet Store

J2EE™ BluePrints Sample Application

Search

[Account](#) | [Cart](#)

[Sign out](#)

Pets

- [Birds](#)
- [Cats](#)
- [Dogs](#)
- [Fish](#)
- [Reptiles](#)

Products for this Category

- [Bulldog](#)
Friendly dog from England
- [Chihuahua](#)
Great companion dog

My List

- [Iguana](#)
- [Rattlesnake](#)

[Next](#)

The Java Pet Store Demo is a fictional sample application from the J2EE BluePrints. For more information, visit the J2EE BluePrints Web site at <http://java.sun.com/j2ee/blueprints/>.

[J2EE BluePrints](#) | [Java Software](#) | [Sun Microsystems](#)

© 2001 Sun Microsystems Inc. All rights reserved. Use is subject to license terms.





Java™ Pet Store

J2EE™ BluePrints Sample Application

[Account](#) | [Cart](#) |
[Sign out](#)
 

Pets

- [Birds](#)
- [Cats](#)
- [Dogs](#)
- [Fish](#)
- [Reptiles](#)

Adult Male Chihuahua



List Price: \$125.50

Little yapper

[Add to Cart](#)

My List

- [Iguana](#)
- [Rattlesnake](#)

The Java Pet Store Demo is a fictional sample application from the J2EE BluePrints. For more information, visit the J2EE BluePrints Web site at <http://java.sun.com/j2ee/blueprints/>.

[J2EE BluePrints](#) | [Java Software](#) | [Sun Microsystems](#)

© 2001 Sun Microsystems Inc. All rights reserved. Use is subject to license terms.





Pets

- [Birds](#)
- [Cats](#)
- [Dogs](#)
- [Fish](#)
- [Reptiles](#)

Your Account Information

Contact Information

First Name

Last Name

Street Address

City

State/Province

Postal Code

Country

Telephone Number

E-Mail

Credit Card Information

Card Number

Card Type

Card Expiry Date /

Profile Information

I want MyPetStore to be in

My favorite category is

- Yes, I want to enable the MyList feature. *MyList makes your favorite items and categories more prominent as you shop.*
- Yes, I want to enable the pet tips banners. *Java Pet Store will display pet tips as you shop, which are based on your favorite items and categories.*

[Beispiel-App](#)

[Komponenten](#)

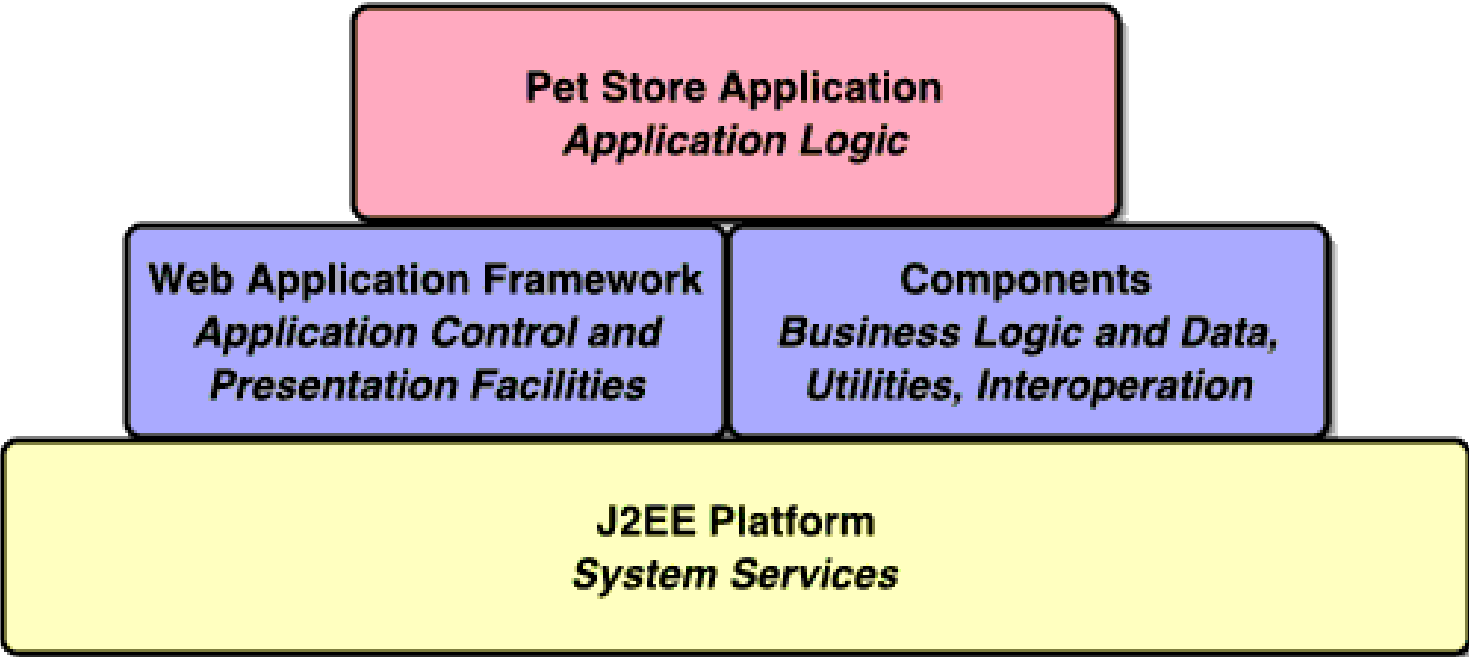
[Kunden-
verwaltung](#)



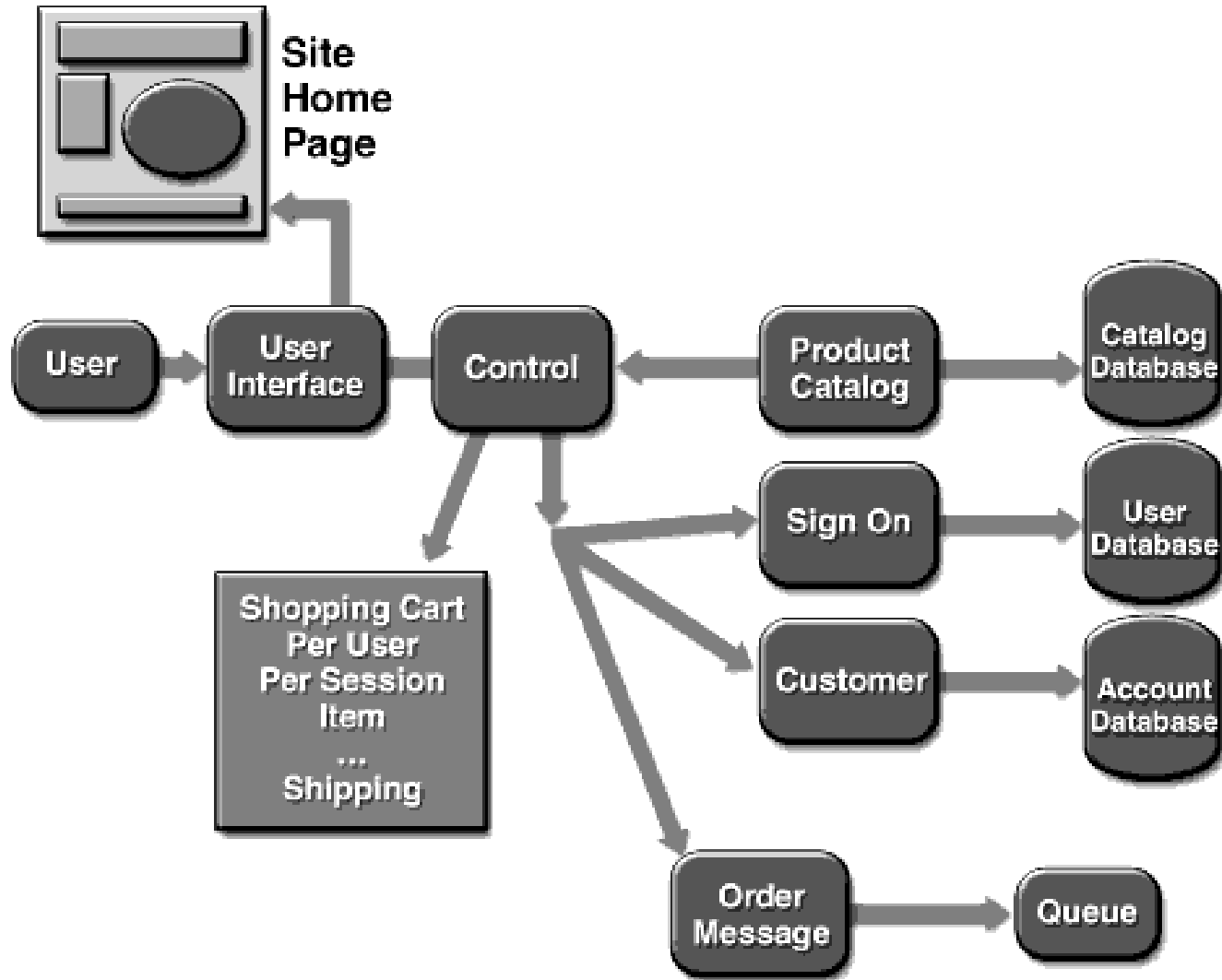


Architektur des Pet Shops

Beispiel-App
Komponenten
Kunden-
verwaltung



Komponenten-Framework

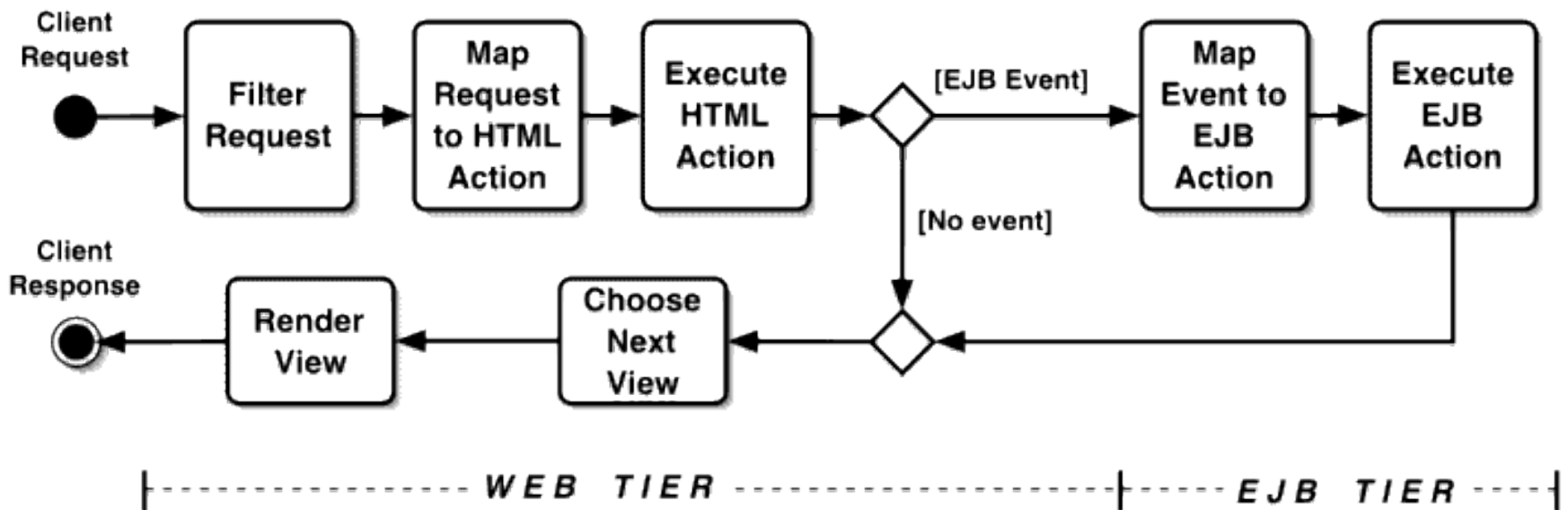


Beispiel-App

Komponenten

Kunden-
verwaltung

Kontrollfluss im Web Shop





Geschäftsprozess: Nutzerverwaltung

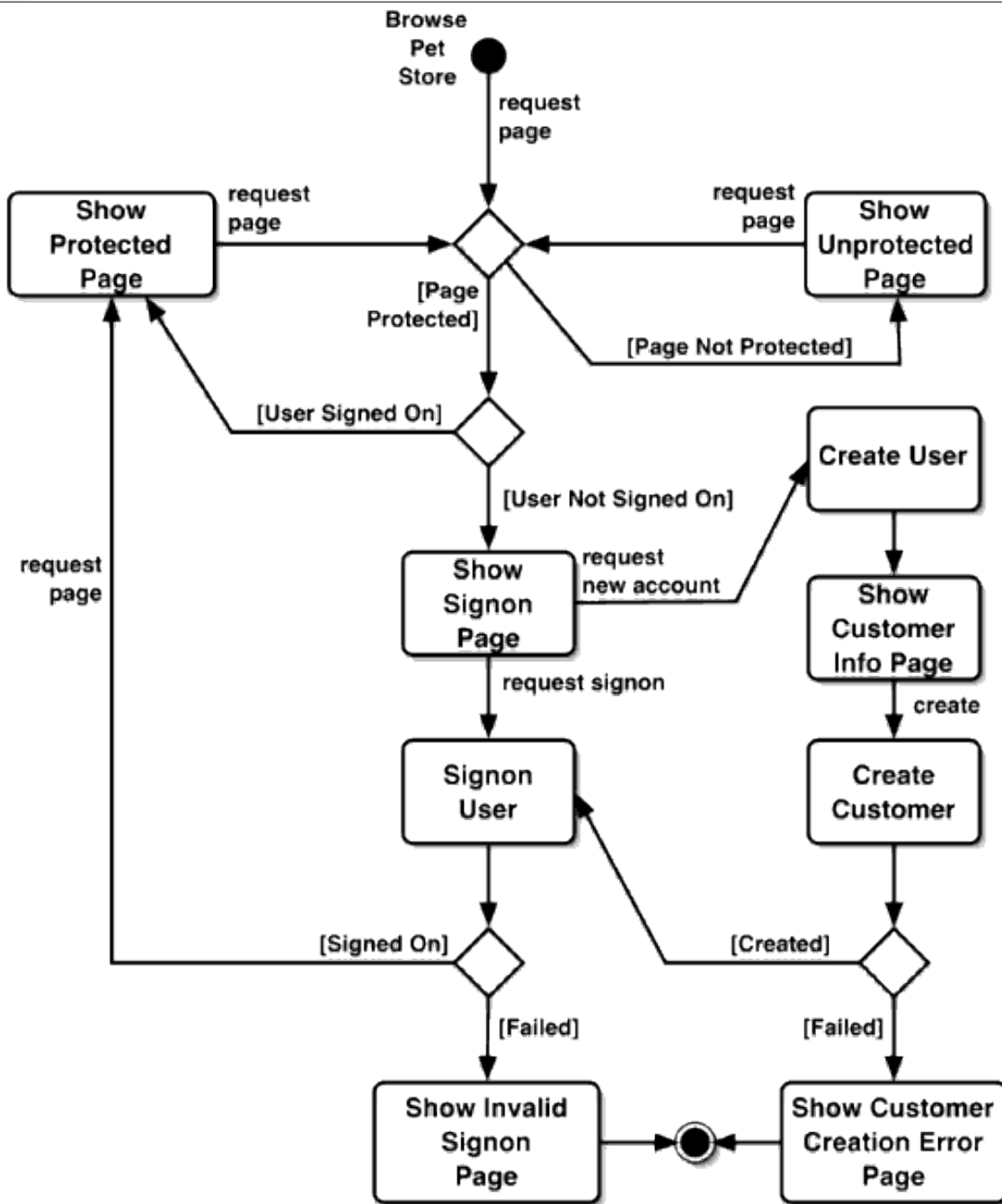
- Aufgaben:
 - Login im Webshop
 - Nutzer-ID, Sprache
 - Fakturierung
 - Lieferadressen, Rechnungsadressen
 - Customer Relationship Management
 - Bestellhistorie
 - Vorlieben
 - Kontaktanschrift

Beispiel-App

Komponenten

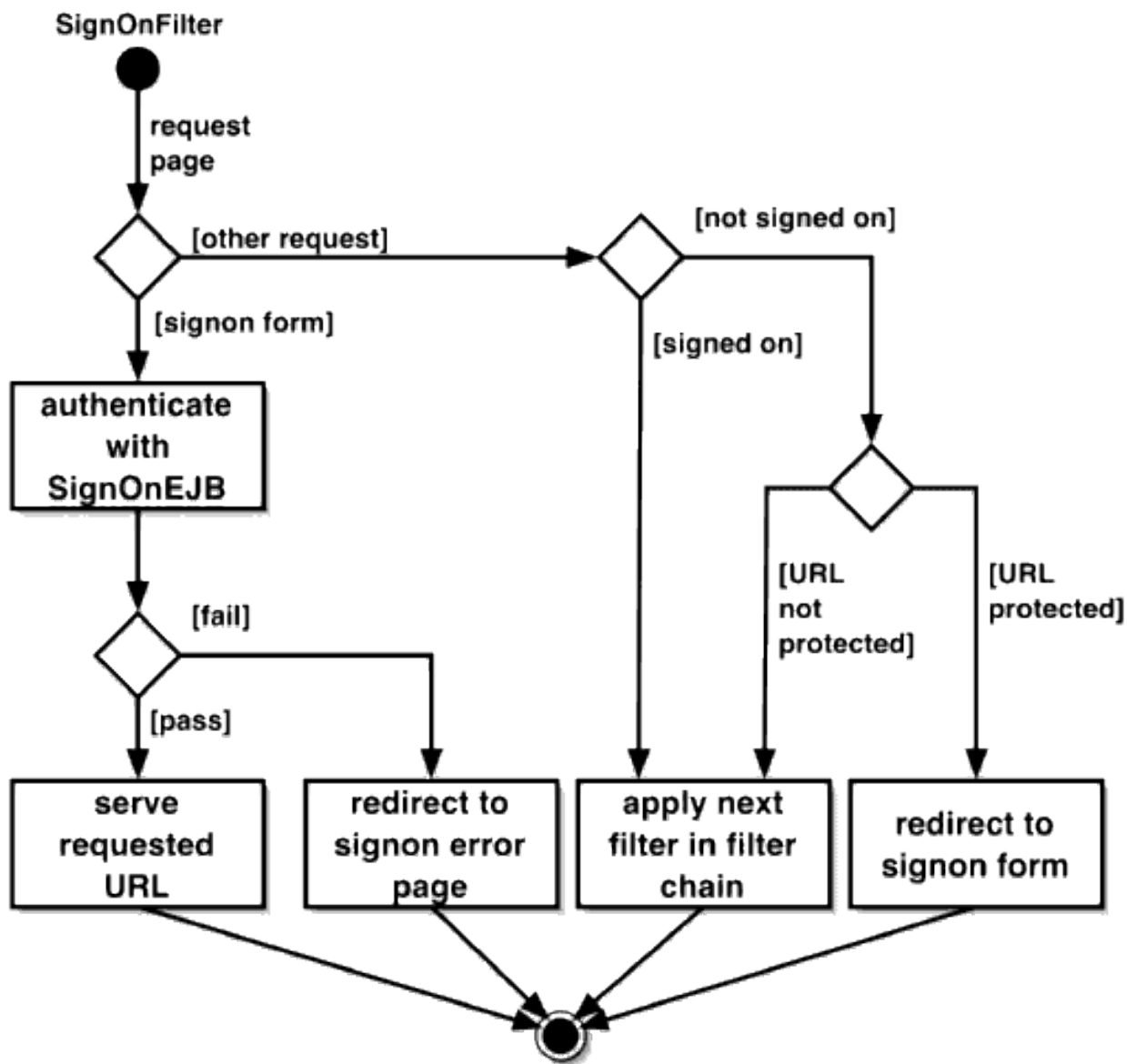
Kunden-
verwaltung





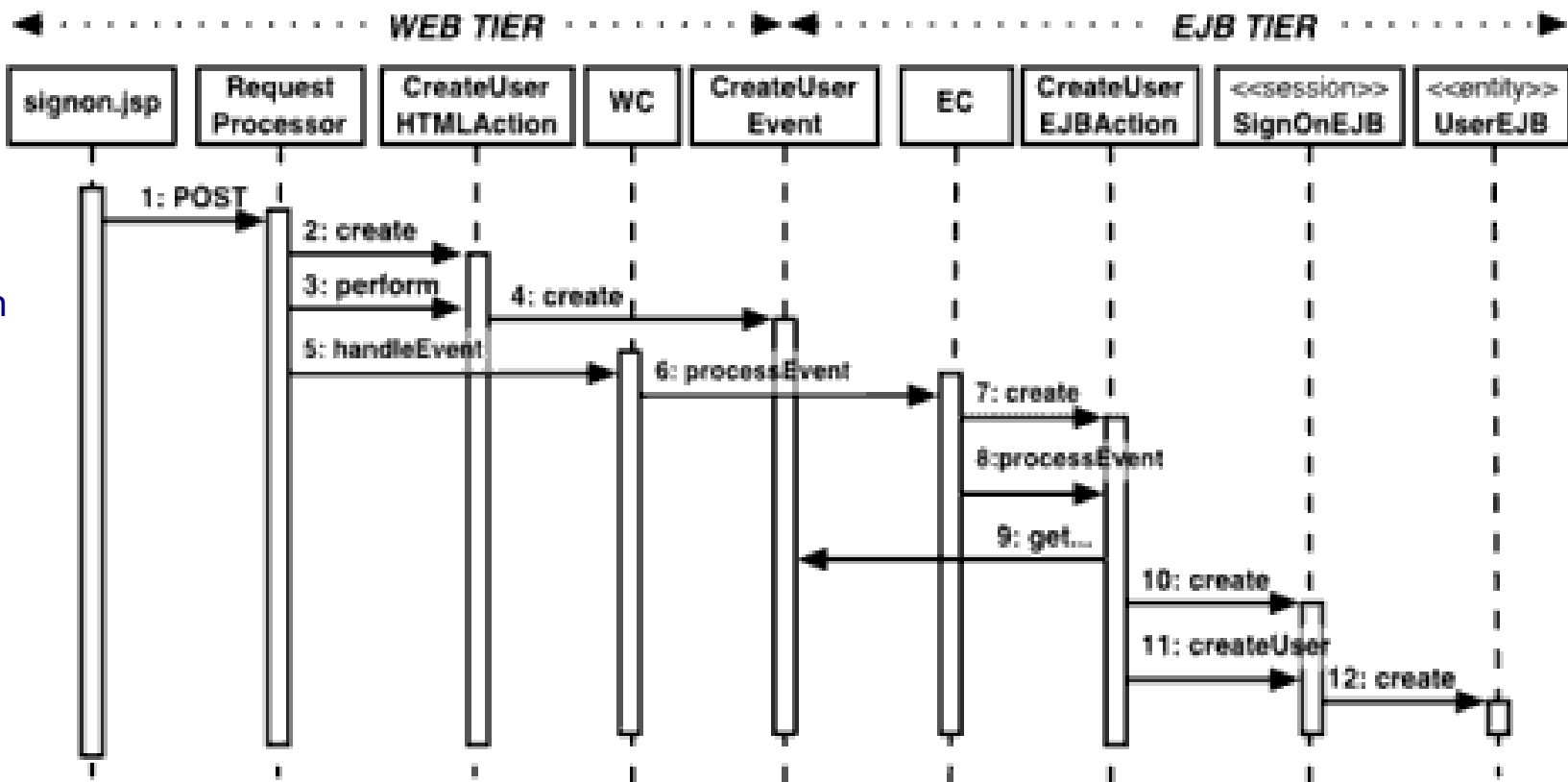
Beispiel-App
Komponenten
Kunden-
verwaltung





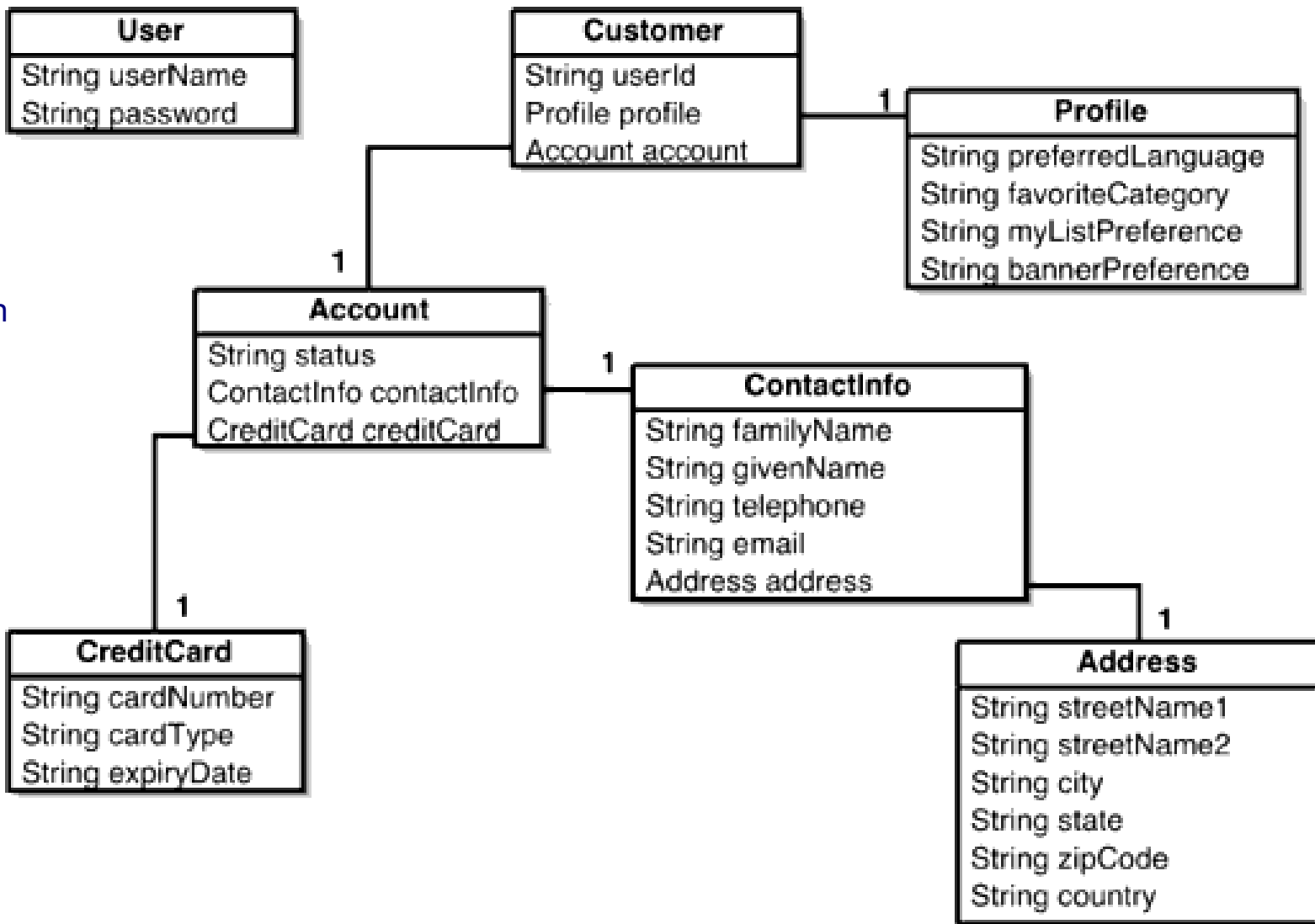
Beispiel-App
Komponenten
Kunden-
verwaltung





Beispiel-App
Komponenten
Kunden-
verwaltung



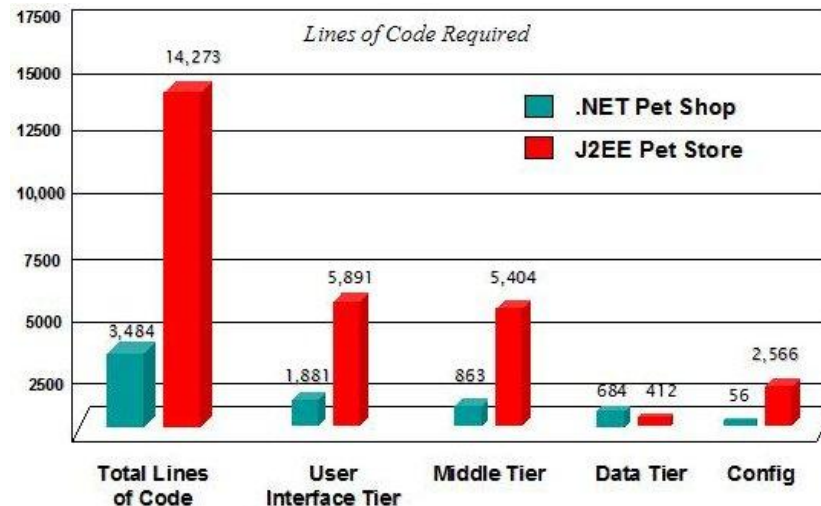


Beispiel-App
Komponenten
[Kunden-](#)
[verwaltung](#)



Ausblick

- In der nächsten Veranstaltung: Pet Shop mit .NET
 - Implementierung der selben Anwendung mit einem anderen Framework
 - Achtung, Vergleich der Performanz ist nicht fair!



(Tested and Reported by Veritest)

- Java Pet Shop ist Technologiedemo, kein Benchmark
→ keine Chance gegen handoptimierten Code